

An aerial view of a small Vermont village nestled in a valley. The landscape is characterized by rolling hills with patches of green fields and dense forests. In the center of the village, a prominent white church with a tall, slender steeple stands out. Surrounding the church are various wooden houses and buildings, including a red barn. The foreground shows a mix of brown and green fields, suggesting a rural setting. The overall scene is peaceful and idyllic.

*Vermont Library Trustees and
Friends Conference*

Slow Democracy and the Power of Community

September, 2020

Rediscovering
community,
bringing
decision making
back home

slow democracy

SUSAN CLARK *and* WODEN TEACHOUT

Foreword by FRANK M. BRYAN





SCIENTISTS: EARTH ENDANGERED BY NEW STRAIN OF FACT-RESISTANT HUMANS



By Andy Borowitz

May 12, 2015



Photograph by NASA Earth Observatory / REX / AP



Giant Meteor

— 2020 —

JUST END IT ALREADY

Rediscovering
community,
bringing
decision making
back home

slow democracy

SUSAN CLARK *and* WODEN TEACHOUT

Foreword by FRANK M. BRYAN



Slow Democracy:

Local decision making that's

- Inclusive
- Deliberative
- Empowered



The image shows the front cover of the book 'The Righteous Mind' by Jonathan Haidt. The cover is white with a diagonal black line running from the bottom left to the top right. The title 'The Righteous Mind' is printed in a large, bold, sans-serif font at the top. Below it, the subtitle 'Why Good People Are Divided by Politics and Religion' is written in a smaller, sans-serif font. At the bottom, the author's name 'Jonathan Haidt' is printed. The book is shown at an angle, revealing the spine on the left side. The spine has some text, including the title and author's name, but it is partially obscured and less legible. The background is a solid teal color.

The Righteous
Mind

Why Good People
Are Divided
by Politics and
Religion

Jonathan Haidt

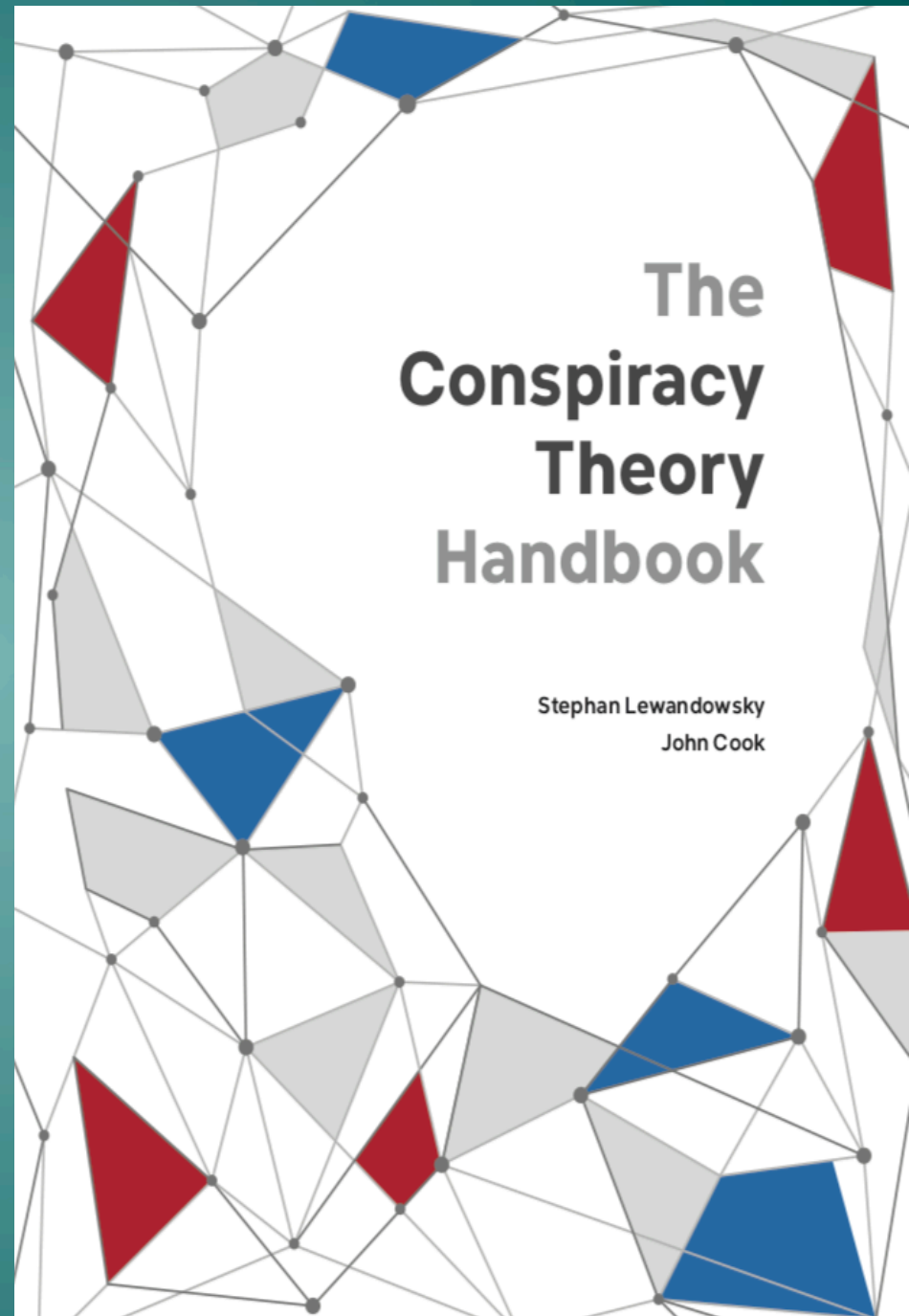
the
DEBUNKING
handbook



John Cook
Stephan Lewandowsky

The
**Conspiracy
Theory
Handbook**

Stephan Lewandowsky
John Cook







Repeopling Vermont

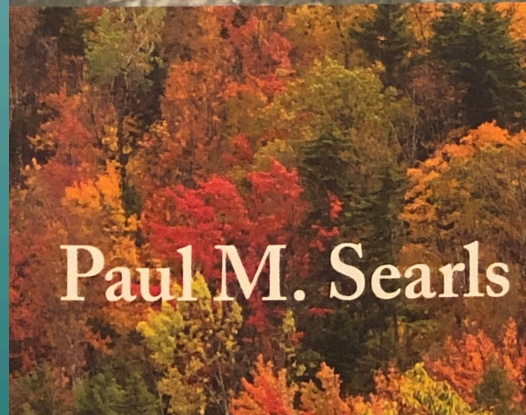
*The Paradox of Development
in the Twentieth Century*

TWO VERMONTS

GEOGRAPHY
AND
IDENTITY,
1865-1910



Paul M. Searls



Paul M. Searls

The book cover features a white line-art illustration on a dark green background. On the left, a man in a suit and hat stands with his hand to his face. On the right, a man in a hat and overalls stands with his hands on a wooden structure. The background of the illustration shows a forest with a small building.

TWO VERMONTS

GEOGRAPHY
AND
IDENTITY,
1865-1910



Paul M. Searls



Repeopling Vermont

*The Paradox of Development
in the Twentieth Century*



Paul M. Searls

Cultural Cognition



Individualist ←————→ Communitarian

Hierarchist



Egalitarian

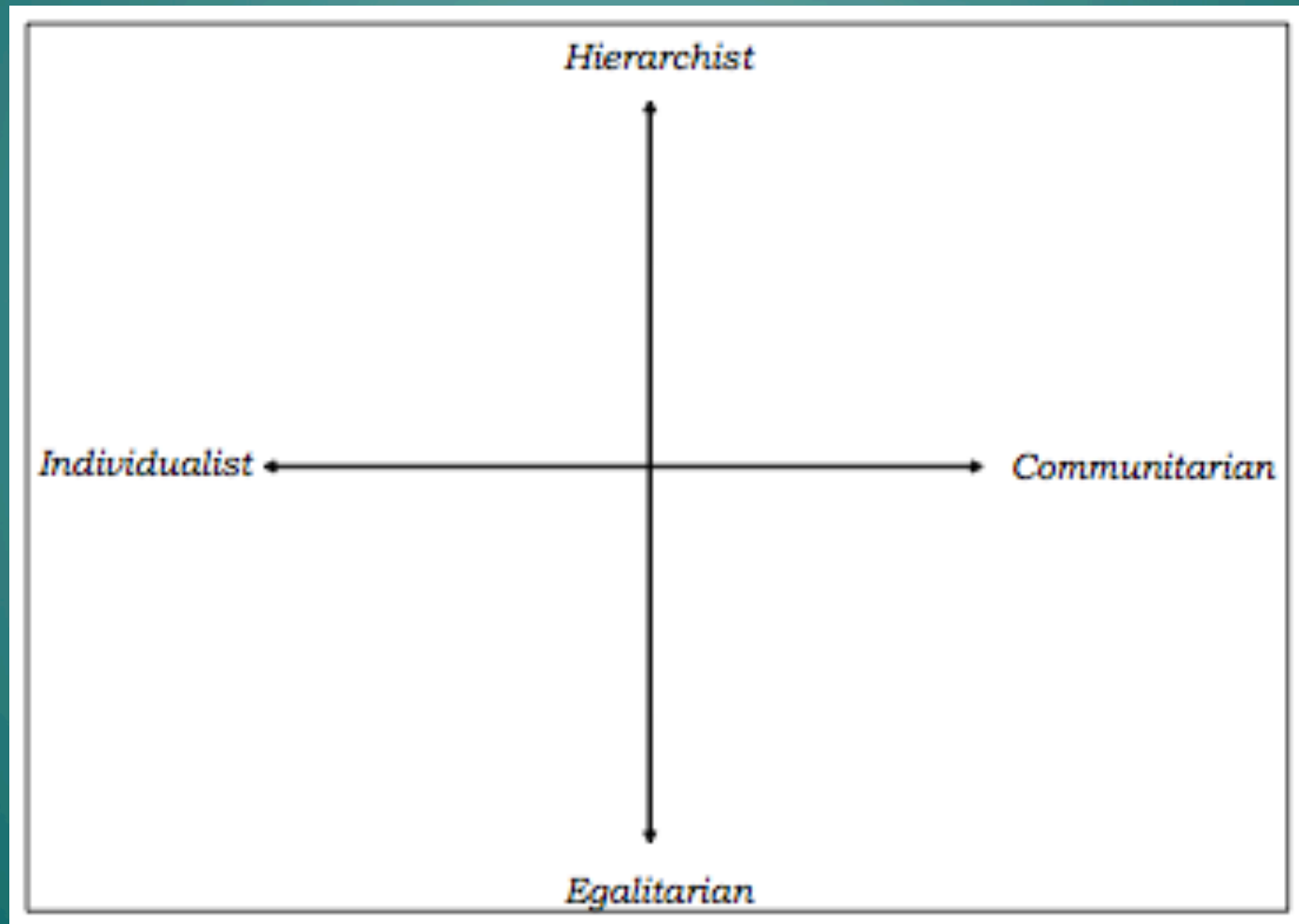
Individualist



Communitarian

“Cultural Worldviews”

The Cultural Cognition Project





PUBLIC LIBRARY
2020
ANNUAL
REPORT

FRIENDS OF
PUBLIC LIBRARY
ANNUAL EVENTS

May
Garden Art Auction
Plant Sale
Garage Sale
November
Holiday Craft Fair,
Bake Sale, and Book Sale
Spring & Fall
Playtime Productions
Performances

Library Visitors

152,955



8,885

Registered
Borrowers

7,127 Resident 1,758 Non-resident

Uses of Public
Internet
Computers

10,085

Wireless
Uses

44,673



13,185

People
Attended

392

Programs

21%
increase





“Cultural Worldviews”

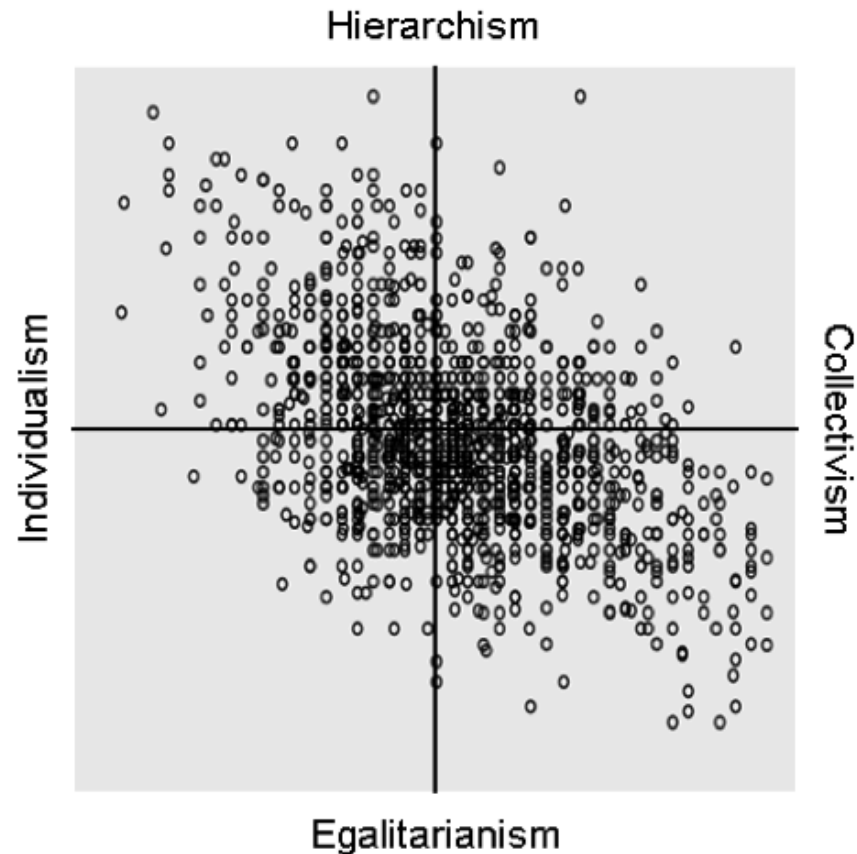
The Cultural Cognition Project, Yale Law School

1788

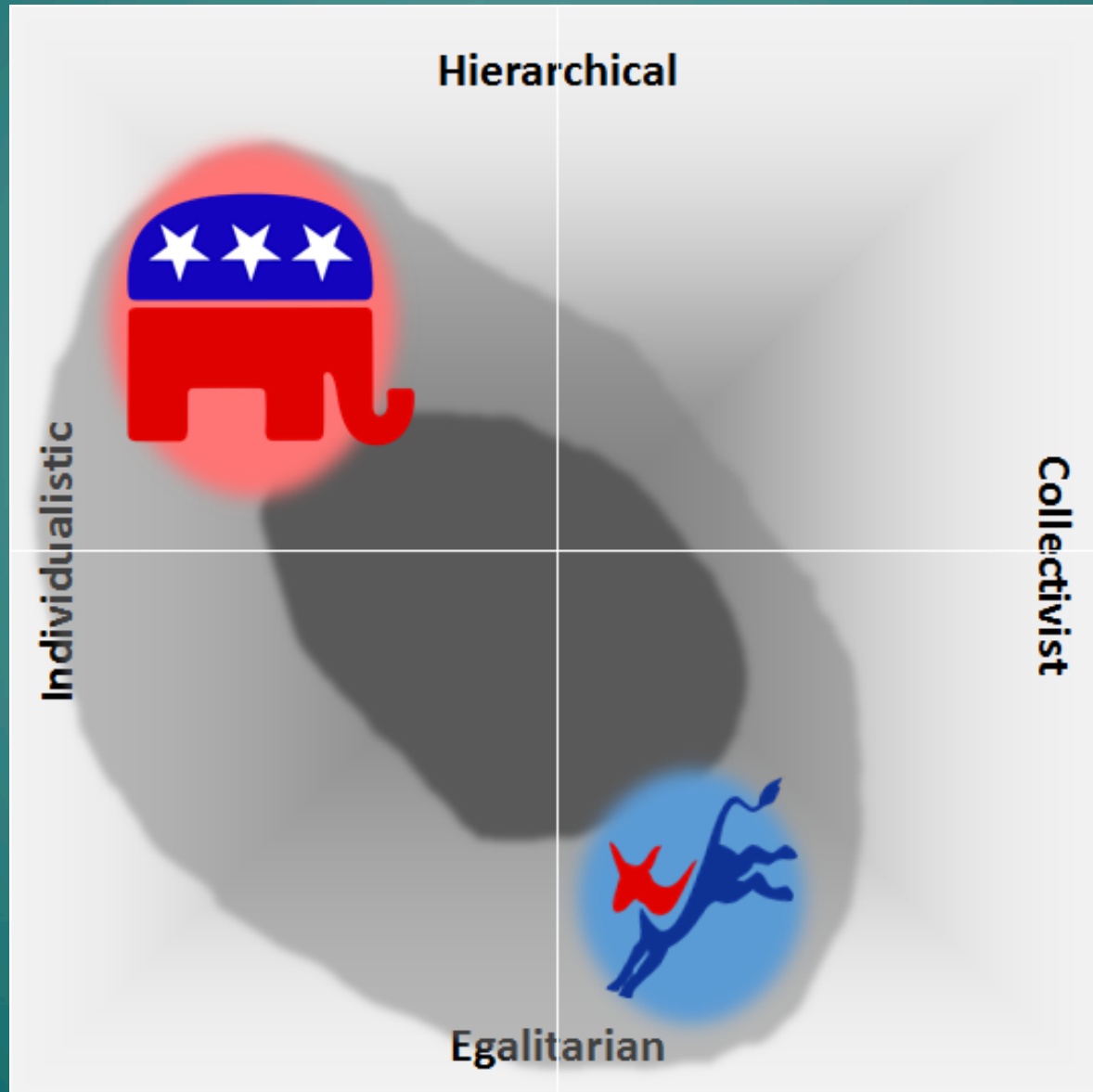
The George Washington Law Review

[Vol. 76:1772

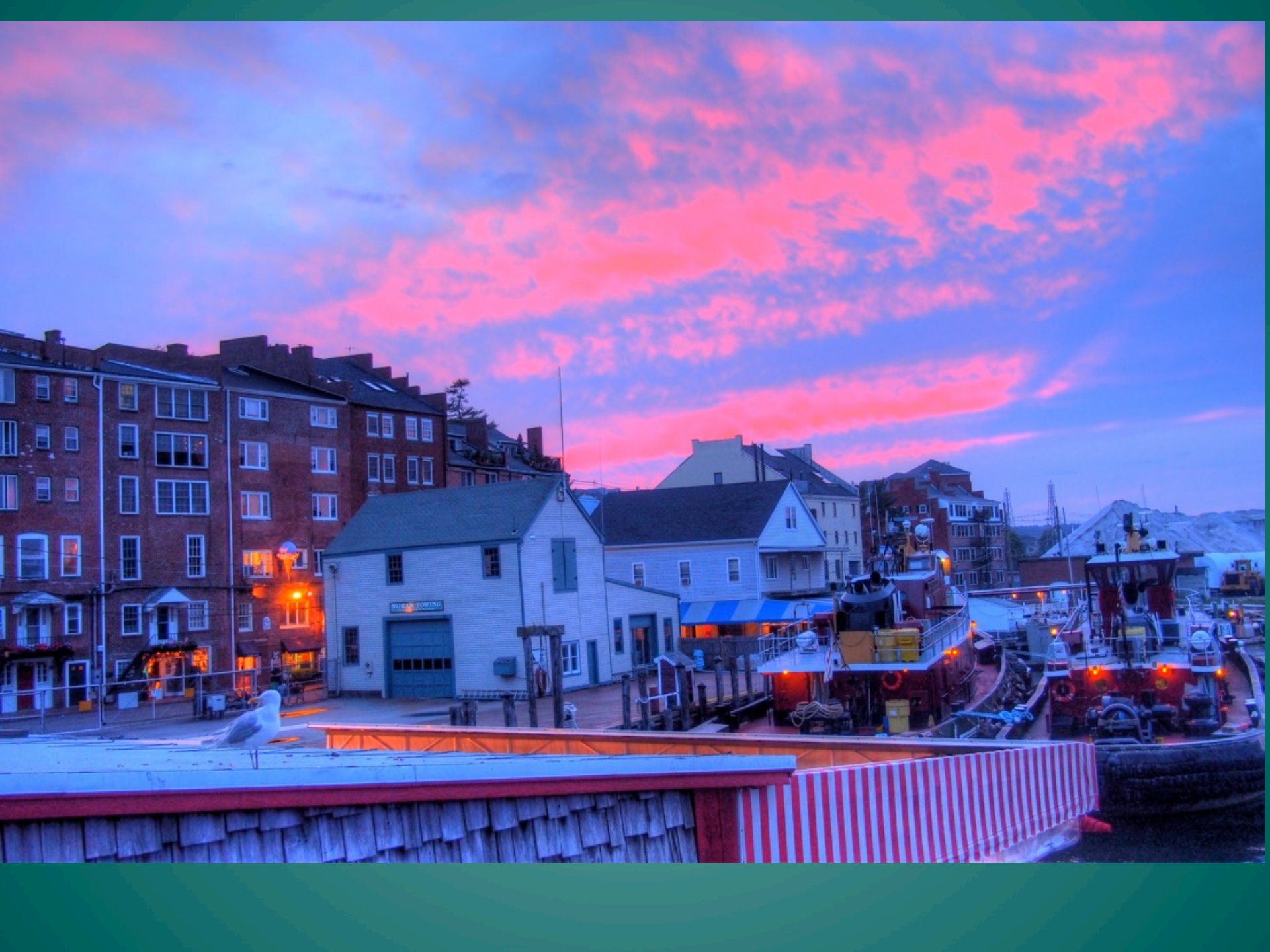
Figure 3. Distribution of Cultural Orientations in the U.S., 2004



Quick overview of national map









portsmouth listens...

Portsmouth Listens is a collaborative effort to help shape the future of the city we love. What began as a grassroots citizen effort to preserve and enhance our local quality of life has grown into a partnership between volunteers and the city.

[CLICK HERE](#)
For Portsmouth Listens
Middle School Study
Circle Reports

Notes

The Portsmouth Master Plan
Process & People
Schedule & Meeting Days
Press Coverage
Sign Up

Portsmouth Listens Annual Meeting May 10, 2008



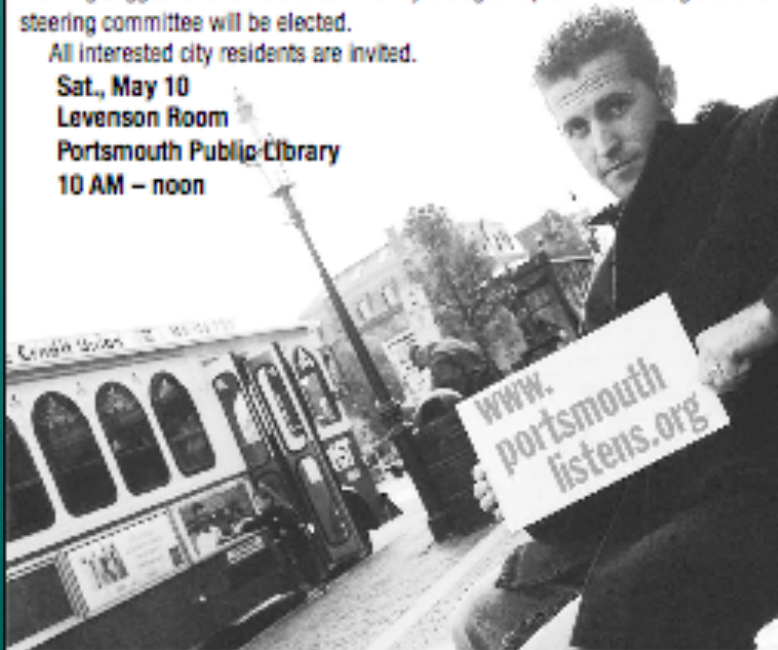
Portsmouth Listens was organized to promote dialogue in the Portsmouth community on issues relevant to making Portsmouth the best place to live and work. Portsmouth Listens itself does not take sides in these dialogues.

Portsmouth Listens has promoted community dialogues on topics such as Portsmouth's school redistricting, its Master Plan, and its Middle School renovation. Portsmouth Listens also has conducted a number of municipal candidate forums and recently co-sponsored Portsmouth's First Annual Sustainability Fair. **Membership in Portsmouth Listens is open to any person who lives or works in Portsmouth.**

On Saturday, May 10, Portsmouth Listens will hold its annual meeting in the Levenson Room of the Portsmouth Public Library from 10am – noon. At this meeting suggestions for future community dialogue topics will be sought and a steering committee will be elected.

All interested city residents are invited.

**Sat., May 10
Levenson Room
Portsmouth Public Library
10 AM – noon**



A PROJECT OF THE PORTSMOUTH PLANNING DEPARTMENT

PLAN PORTSMOUTH

EXTENDING PORTSMOUTH'S NEW CHARACTER ZONING TO THE ISLINGTON STREET CORRIDOR

Participate in Shaping the Future of our City!



- Opening Session:** Friday, February 20th, 6:00pm
Frank Jones Center (400 Route One Bypass)
- Round Table Meetings:** Saturday, February 21st
Businesses, Land Owners, Developers: 10:00am
Building Scale & Design: 12:30pm
Public Realm & Civic Spaces: 2:00pm
Frank Jones Center (400 Route One Bypass)
- Interim Pin-Up+Review:** Sunday, February 22nd, 9:00pm
Frank Jones Center (400 Route One Bypass)
- Closing Session:** Monday, February 23rd, 6:00pm
City Hall Council Chambers
- Open Studio:**
Friday, February 20th: 9:00am to 9:00pm
Saturday, February 21st: 9:00am to 9:00pm
Sunday, February 22nd: 9:00am to 9:00pm
Monday, February 23rd: 9:00am to 4:00pm
Frank Jones Center (400 Route One Bypass)

Please stop in!

What's a Charrette? *(shuh-rett)*
A Charrette is an intense, participatory design and public input process where all members of the community work directly with a multidisciplinary consulting team. The entire process is open to the public at all times. Be a part of "Plan Portsmouth" and help us craft improvements to the Zoning Ordinance that will protect and enhance the Islington Street Corridor far into the future.
Please join us as the City of Portsmouth and its consultant, Town Planning & Urban Design Collaborative LLC, continue to work with local citizens and stakeholders to create a Vision Plan and Character-Based Zoning for the Islington Street Corridor (including Gate Street and the Brewery District).
For more information see planportsmouth.com/characterbasedzoning.html and Facebook "Plan Portsmouth"

PUBLIC DESIGN CHARRETTE FEBRUARY 20-23





III. OUR PROPOSED BUDGET

Columnar Items	Service Area	FY 2011 Budget
1.	Municipal	\$15.7m
2.	Fire	\$6.7m
3.	Police	\$6.4m
4.	Schools	\$36.9m
	Departmental Sub-total	\$65.7
5.	County*	\$4.3m
6.	TOTAL	\$70.0m



I. WELCOME
II. REPORTS
 - American Council
 - PMA
 - Bar Harbor
 - David Green
 - Fleet
 - Hill House
 - Longman

A man in a dark blue shirt stands at a wooden podium, looking down at a piece of paper he is holding.

An audience of several people is seated at tables, facing the speaker. They are mostly seen from the back or side.



Warm Cookies of the Revolution

A “Civic Health Club”



CIVIC STITCH 'N BITCH

Bring your hand-occupying activities and
take part in one of our discussions



CIVIC STITCH 'N BITCH

Bring your hand-occupying activities and
take part in one of our discussions



WATCH SPORTS. DRINK BEER. DISCUSS ISSUES.

CIVIC STITCH 'N BITCH




Bri

HOW TO SURVIVE A ZOMBIE APOCALYPSE



WATCH SPORTS. DRINK BEER. DISCUSS ISSUES.

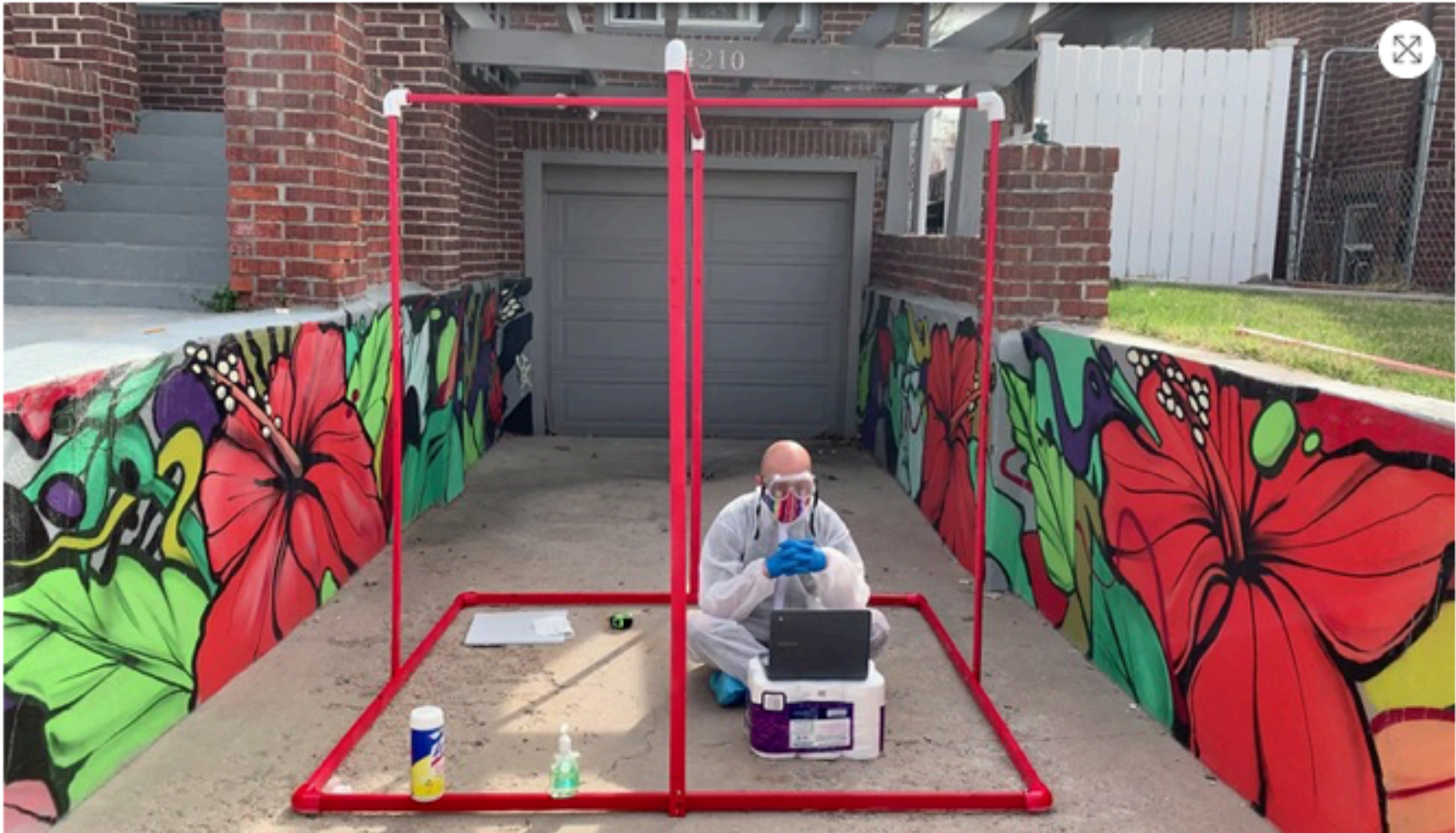


**ZOMBIE
FALLOUT SHELTER**

FORTEAN EMERGENCY EVENT SHELTER AREA. CAPACITY 12
PERSONS ONLY. DO NOT EXCEED CAPACITY UNDER ANY
CIRCUMSTANCES!

PHOTOGRAPH BY KALLA 2008

A yellow radiation symbol is centered on a black background. Below it, the text "ZOMBIE FALLOUT SHELTER" is written in bold, yellow, sans-serif font. Underneath that, in smaller white text, is the warning: "FORTEAN EMERGENCY EVENT SHELTER AREA. CAPACITY 12 PERSONS ONLY. DO NOT EXCEED CAPACITY UNDER ANY CIRCUMSTANCES!". At the bottom, in very small white text, is "PHOTOGRAPH BY KALLA 2008".



Bobby LeFebre is among the artists included in Warm Cookies of the Revolution's Virtual Gift Baskets. / **Bobby LeFebre**

Warm Cookies of the Revolution Creates Virtual Gift Baskets







[HOME](#)

[ABOUT](#)

[ONLINE](#)

[IN-PERSON](#)

[LIBRARY](#)

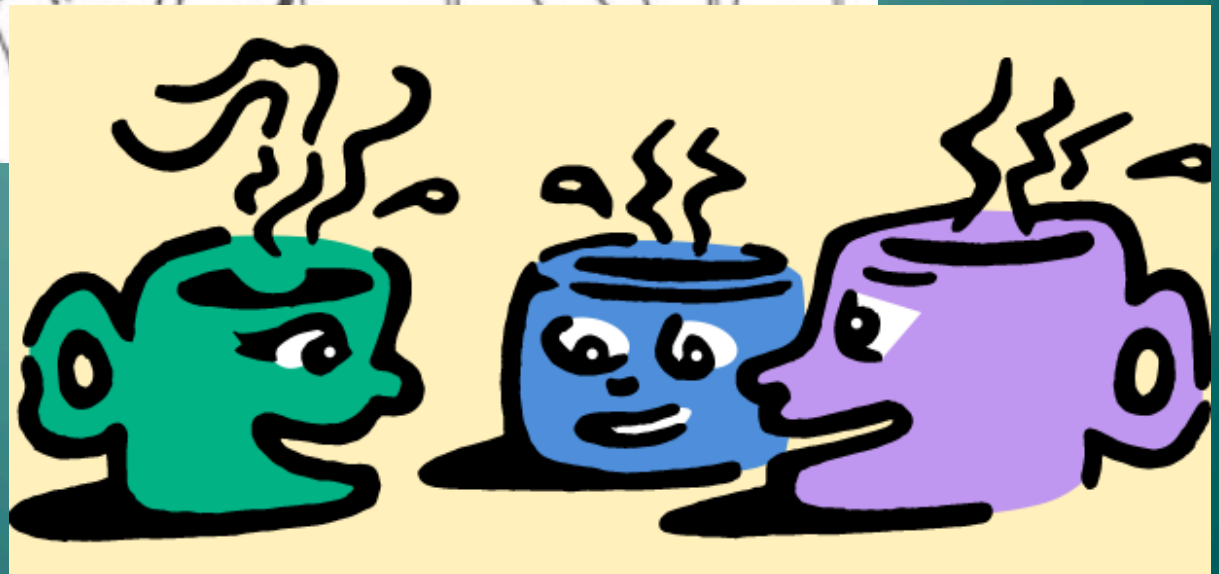
[GIVE NOW](#)



Make Shift Coffee House

Conversations across our differences

Award-winning format. Online. You're invited.





Conversation Café

Tired of small talk? Try some BIG talk!

www.conversationcafe.org

Conversation Cafés are open, hosted conversations in cafés and other public spaces. Nothing to join, no homework, no agenda – just a simple process that helps us make sense of our world and each other.

Questions to go deeper:

- What happened that led you to this point of view?
- How does this affect you personally?
- I'm curious, can you say more about that?
- Here's what I heard . . . is that what you mean?

For many more dialogue tools & resources, visit nodd.org

If you want to go fast,

go alone.

If you want to go far,

go together.

- African Proverb -

Rediscovering
community,
bringing
decision making
back home

slow democracy

SUSAN CLARK *and* WODEN TEACHOUT

Foreword by FRANK M. BRYAN



www.slowdemocracy.org